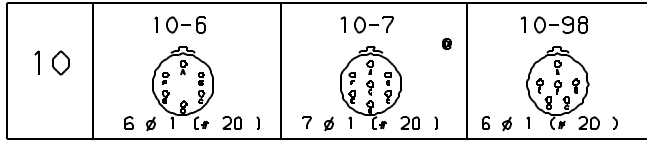


Viewed from front face of male insulator



Version no 0PL

Insert rotation

shell	layout	angle in degrees				service 1 1500 Vrms	service 2 2300 Vrms
		W	X	Y	Z		
10	6	90	--	--	--	X	
	7	--	--	--	--	X	
	98	90	180	240	270	X	

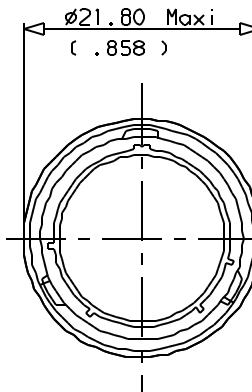
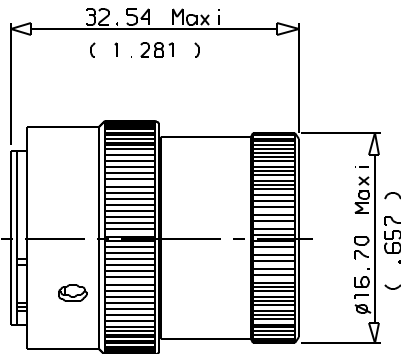
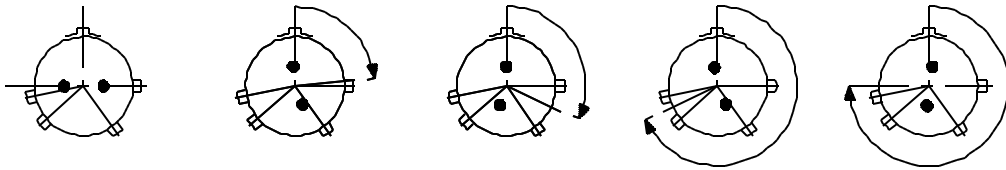
Normal

W

X

Y

Z



DIMENSIONS:
-,- mm
(-- --) inches

MS-3116 E 10 -* S/P N

CONTACT TYPE, P=Male-S=Female
LAYOUT ORIENTATION

FCI-851 06E 10-* S/P N **-*

CONTACT TYPE, P=Male-S=Female
LAYOUT ORIENTATION

SPECIFICATION
OBLIGATORY SUFFIX

- Olive green cadmium plate (without specification)
- 02 White cadmium plate (without specification)
- 29 Black anodised (solder contacts)
- 031 Black anodised (crimp contacts)
- 44 Nickel plate
- 38 Nickel plate
- 42 Olive green cadmium plate Bockshell type T and RT
- 50 Gold plated crimp contacts-
- Solder contacts size 20-
- Contacts with a gold plated active zone
- and tin plated terminations-other gold plated terminations
- 51 Solder contacts gold plated size 20
- 52 Zinc cobalt olive green plated (contacts: ideal specification)

851 version is on US-0PL
Characteristics following MIL C 26482 5.1

TITLE: PLUG WITH BACKNUT



FCI-FRANCE
Route Nationale 23
72470 CHAMPAGNE
Tel. (33)02.43.54.35.00

This document is the property of FCI
It must not be reproduced or communicated without permission in writing from the owners

FORMAT
A4

FCI DRG N°
C101-851-A

Date : 12/07/99
Revision : 0