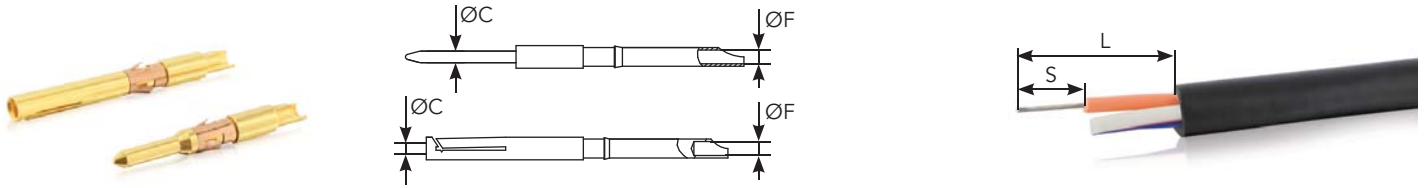


## Solder contacts



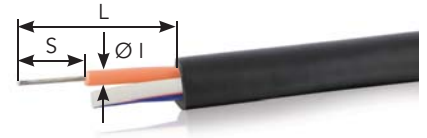
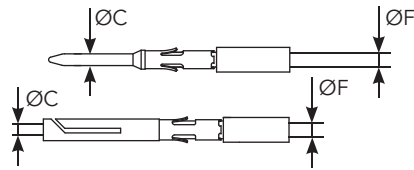
Contact size ØC	ØF		Wire size (Stranded)		Part number		Max current rating (A)	Contact resistance (mΩ)
	mm	inch	AWG (maxi)	mm <sup>2</sup> (maxi)	Male	Female		
#24 Ø 0.5 mm / Ø 0.019"	0.50	0.019"	28	0.09	Not available	Not available	5	10
#22 Ø 0.7 mm / Ø 0.027"	0.80	0.031"	22	0.34	Not available	Not available	7	5
#20 Ø 0.9 mm / Ø 0.035"	0.80	0.031"	22	0.34	JBX1CTMS09	JBX1CTFS09	10	3.5
#18 Ø 1.3 mm / Ø 0.051"	1.10	0.043"	20	0.50	JBX1CTMS13	JBX1CTFS13	15	3

\* Part numbers for removal contacts only

## Wire stripping instructions

Contact size	L		S	
	mm	inch	mm	inch
#24 Ø 0.5 mm / Ø 0.019"	20	0.790"	2	0.079"
#22 Ø 0.7 mm / Ø 0.027"	20	0.790"	3	0.118"
#20 Ø 0.9 mm / Ø 0.035"	20	0.790"	3	0.118"
#18 Ø 1.3 mm / Ø 0.051"	20	0.790"	3.5	0.138"

### Crimp contacts (Not available in Ø 0.5 mm versions)



Contact size ØC	ØF		Wire size (Stranded)		Part number*		Max current rating (A)	Contact resistance (mΩ)
	mm	inch	AWG (min-maxi)	mm <sup>2</sup> (min-maxi)	Male	Female		
#22 Ø 0.7 mm/ Ø 0.027"	0.85	0.033"	26-22	0.14-0.34	<b>JBX1CTMC07</b>	<b>JBX1CTFC07</b>	7	5
#20 Ø 0.9 mm/ Ø 0.035"	1.10	0.043"	24-20	0.25-0.50	<b>JBX1CTMC09</b>	<b>JBX1CTFC09</b>	10	3.5
#18 Ø 1.3 mm/ Ø 0.051"	1.40	0.055"	22-18	0.50-1.00	<b>JBX1CTMC13</b>	<b>JBX1CTFC13</b>	15	3

\* Part numbers for removal contacts only

### Wire stripping instructions

Contact size	Ø I (diameter over insulation)		L		S	
	mm	inch	mm	inch	mm	inch
#22 Ø 0.7 mm/ Ø 0.027"	> 1.35	≤ 0.053"	20	0.790"	4	0.157"
	> 1.35	> 0.053"			5.5	0.217"
#20 Ø 0.9 mm/ Ø 0.035"	≤ 1.60	≤ 0.062"	20	0.790"	4	0.157"
	> 1.60	> 0.062"			5.5	0.217"
#18 Ø 1.3 mm/ Ø 0.051"	≤ 2.10	≤ 0.082"	20	0.790"	4	0.157"
	> 2.10	> 0.082"			5.5	0.217"

## Tooling

### Crimp tool table

#### Crimp contacts

Contact size	Shell type	Part number*		Crimp tooling	Locator		Extraction tools
		Male	Female		Male	Female	
#22 Ø 0.7 mm/ Ø 0.027"	1	JBX1CTMC07	JBX1CTFC07	MIL-22520/7-01	JBX10UTLP07	JBX10UTLS07	JBXOUTDC07
#20 Ø 0.9 mm/ Ø 0.035"	1	JBX1CTMC09	JBX1CTFC09	MIL-22520/7-01	JBX10UTLP09	JBX10UTLS09	JBXOUTDC09
#18 Ø 1.3 mm/ Ø 0.051"	1	JBX1CTMC13	JBX1CTFC13	MIL-22520/7-01	JBX10UTLP13	JBX10UTLS13	JBXOUTDC13

\* Part numbers for removal contacts only

#### Contact extraction instruction

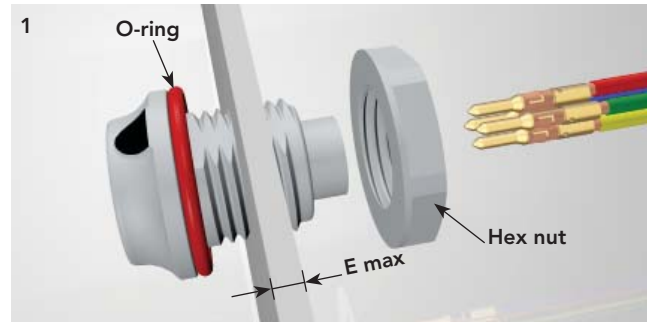
- Place the tool into the cavity from front face of the insulator
- Push on the handle
- Remove the contact by pulling on it.



## JMX receptacle assembly instructions

### JMXHH assembly (mounting suggestion)

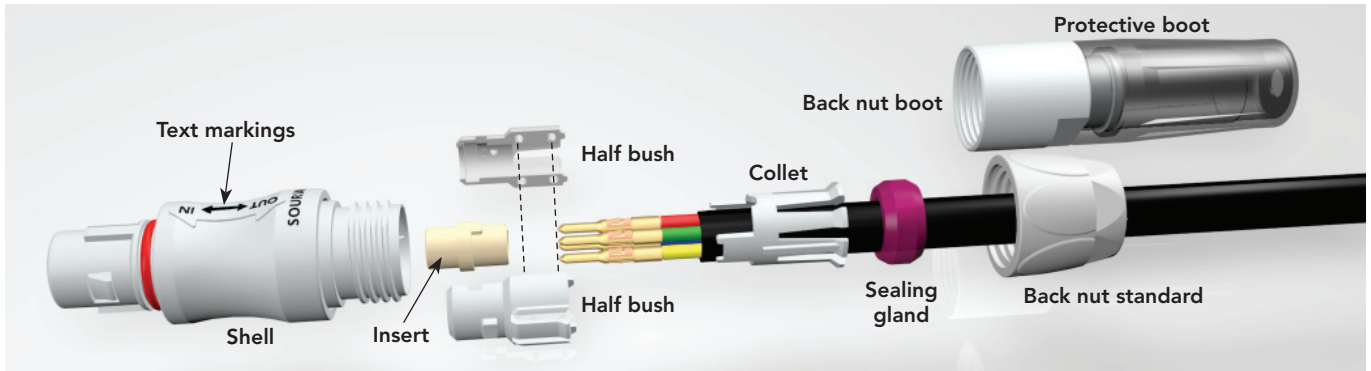
- 1) Solder or crimp the wires to the contacts (see pages 55 & 56)
- 2) Check carefully the presence of the o-ring on the receptacle
- 3) Place the receptacle in the panel cut out. Make sure the panel thickness is inferior to E maxi
- 4) Screw the hex nut to the bulkhead with a wrench according the recommended tightening torque
- 5) Insert contacts manually in the cavities for removable contacts versions



Tightening torque (Nm) maxi	Wrench size	E Panel maxi thicknesses	
		mm	inch
2.5	22 mm	8	0.177"

# JMX plug assembly instructions (Instruction included in the plug packaging)

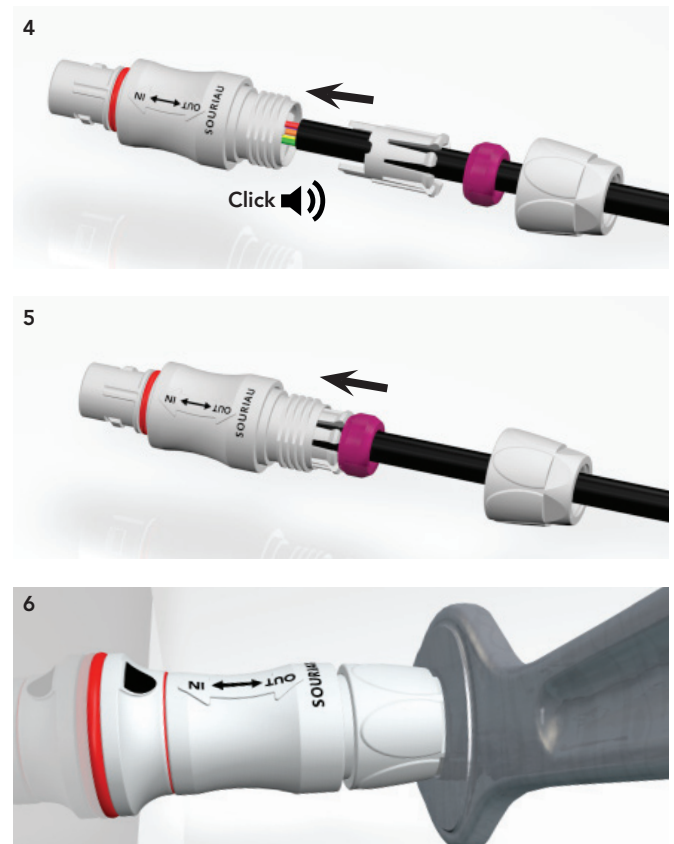
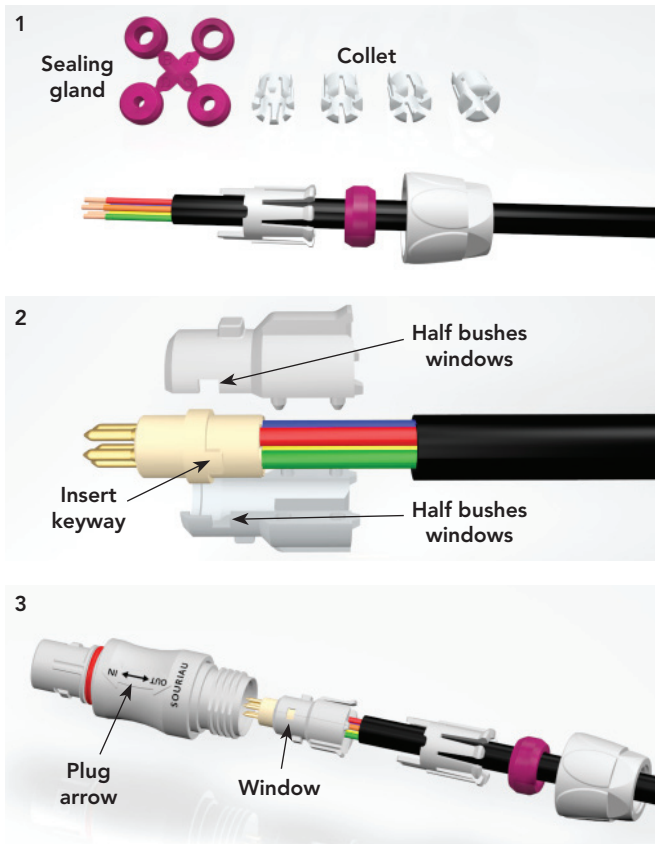
## JMXFH assembly (mounting suggestion)



- 1) Slide the backnut, the sealing gland and the collet onto the cable (see "collet & sealing gland selection" table). Strip the external cable jacket and wires (see dimensions pages 55 & 56). Solder or crimp the wires to the contacts (see pages 55 & 56). For removable contacts, insert them manually in the insert.
- 2) Place the insert keyway into the half bushes windows (fig. 2).
- 3) Align the half bushes window with the plug arrow (fig. 3).

- 4) Slide the subassembly until hearing an audible click (fig. 4).
- 5) Slide the collet, the sealing gland and the backnut (fig. 5).
- 6) Apply a torque of 1.5 Nm on the backnut with a wrench size 14 mm (fig. 6).

Collet & sealing gland selection			
Ø cable maxi	Indice	Ø cable maxi	Indice
7.5 mm/0.295"	A	4.8 mm/0.189"	C
6.2 mm/0.242"	B	3.5 mm/0.138"	D



Note: Assembly operations mentioned above shall not interfere or to be in contradiction with the IPC-WHMA-A-620B